



## Nutsplitter

The Hydratight Nutsplitter is a fast, sure and safe method to remove corroded or seized nuts without the need for hot cutting, chiseling or grinding. Powerful, robust and reliable hydraulic cylinders drive the precision engineered cutting wedge through the flat of the nut.

Its cutting wedge, with three cutting edges, has been designed for maximum life and minimum installation time. Wedges can be changed in seconds. Spring retract on the hydraulic cylinder ensures fast and effective cutting, while the wedge design allows the nut to be split without damage to the threads on the bolt or stud. Both the cutting wedge and cut split nut segments are safely contained within the Nutsplitter housing.

Various cutting heads can be used, and easily swapped out, with the hydraulic cylinder; reducing tool inventories and maximizing tool utilization.

With a range of cylinders and interchangeable heads, the tools are designed to cover all ANSI flanges up to 36".

### Features:

- No thread damage to bolts or studs
- All cylinders are spring return for fast cylinder retraction
- Interchangeable cutting heads available to suit appropriate hydraulic cylinder
- Integral pressure relief valve to prevent over-pressurization
- Fits standard ANSI flanges
- Maximum tool operating pressure 20,000 psi (1400 bar)

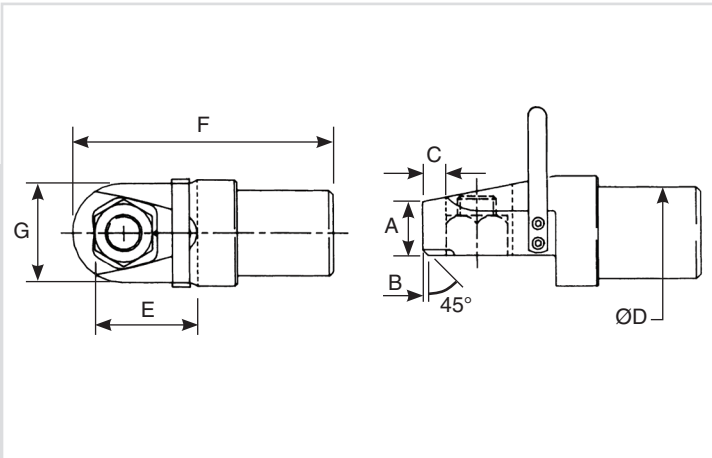


Powered by hydraulics



No damage to the stud or threads

## Nutsplitter



Part No.	Cutting Head	Hydraulic Cylinder	Bolt Size	Unit of Measure	Nut Size - A/F	A	B	C	D	E	F	G	Wt
M0201A0000XX	No.1 Head Assembly 3/4" Max Stud	Covers No1 - No4 Cutting Heads *M0202A0000XX	3/4" (M20)	Std. - in.	1-1/4	1.61	0.16	0.55	3.00	2.20	8.27	2.52	13.2 lbs
	Metric - mm			30	41	4	14	76	56	213	64	6 kg	
M0201B0000XX	No.2 Head Assembly 7/8" Max Stud		3/4" - 7/8" (M20-M24)	Std. - in.	1-1/4 - 1-7/16	1.61	0.16	0.59	3.00	2.36	8.58	2.60	13.6 lbs
	Metric - mm			25 - 36	41	4	15	76	60	218	66	6.2 kg	
M0201C0000XX	No.3 Head Assembly 1" Max Stud	7/8" - 1" (M24-M27)	Std. - in.	1-7/16 - 1-5/8	1.61	0.16	0.63	3.00	2.56	8.78	2.91	14.3 lbs	
	Metric - mm		36 - 41	41	4	16	76	65	223	74	6.5 kg		
M0201D0000XX	No.4 Head Assembly 1.1/8" Max Stud	1" - 1-1/8" (M27-M30)	Std. - in.	1-5/8 - 1-13/16	1.61	0.16	0.73	3.0	2.95	9.09	3.15	15.4 lbs	
	Metric - mm		41 - 46	41	4	18.5	76	75	231	80	7 kg		
M0201E0000XX	No.5 Head Assembly 1.1/4" Max Stud	Covers No5 - No9 Cutting Heads *M0202B0000XX	1-1/8" - 1-1/4" (M30-M33)	Std. - in.	1-13/16 - 2	2.20	0.24	0.77	3.74	4.05	10.86	3.39	17.6 lbs
	Metric - mm			46 - 50	56	6	19.5	95	103	276	86	8 kg	
M0201F0000XX	No.6 Head Assembly 1.3/8" Max Stud		1-1/4" - 1-3/8" (M33-M36)	Std. - in.	2 - 2-3/16	2.20	0.24	0.83	3.74	4.25	11.10	3.62	19.8 lbs
	Metric - mm			50 - 55	56	6	21	95	108	282	92	9 kg	
M0201G0000XX	No.7 Head Assembly 1.1/2" Max Stud	1-3/8" - 1-1/2" (M36-M39)	Std. - in.	2-3/16 - 2-3/8	2.20	0.24	0.88	3.74	4.37	11.30	4.01	24.2 lbs	
	Metric - mm		55 - 60	56	6	22.5	95	111	287	102	11 kg		
M0201H0000XX	No.8 Head Assembly 1.5/8" Max Stud	1-1/2" - 1-5/8" (M39-M42)	Std. - in.	2-3/8 - 2-9/16	2.20	0.24	0.94	3.74	4.53	11.57	4.33	30.8 lbs	
	Metric - mm		60 - 65	56	6	24	95	115	294	110	14 kg		
M0201J0000XX	No.9 Head Assembly 1.3/4" Max Stud	1-5/8" - 1-3/4" (M42-M45)	Std. - in.	2-9/16 - 2-3/4	2.20	0.24	1.00	3.74	4.80	11.81	4.49	41.8 lbs	
	Metric - mm		65 - 70	56	6	25.5	95	122	300	114	19 kg		
M0201K0000XX	No.10 Head Assembly 1.7/8" Max Stud	Covers No10 - No14 Cutting Heads *M0202C0000XX	1-3/4" - 1-7/8" (M45-M48)	Std. - in.	2-3/4 - 2-15/16	3.07	0.31	1.06	5.63	5.39	14.72	4.88	56.2 lbs
	Metric - mm			70 - 75	78	8	27	143	137	374	124	25.5 kg	
M0201M0000XX	No.11 Head Assembly 2" Max Stud		1-7/8" - 2" (M48-M52)	Std. - in.	2-15/16 - 3-1/8	3.07	0.31	1.14	5.63	5.55	14.88	5.16	70.5 lbs
	Metric - mm			75 - 80	78	8	29	143	141	378	131	32 kg	
M0201N0000XX	No.12 Head Assembly 2.1/4" Max Stud	2" - 2-1/4" (M52-M56)	Std. - in.	3-1/8 - 3-1/2	3.07	0.31	1.20	5.63	5.90	15.35	5.67	87.1 lbs	
	Metric - mm		80 - 85	78	8	30.5	143	150	390	144	39.5 kg		
M0201P0000XX	No.13 Head Assembly 2.1/2" Max Stud	2-1/4" - 2-1/2" (M56-M64)	Std. - in.	3-1/2 - 3-7/8	3.07	0.31	1.24	5.63	6.30	15.79	6.22	103.6 lbs	
	Metric - mm		85 - 95	78	8	31.5	143	160	401	158	47 kg		
M0201R0000XX	No.14 Head Assembly 2.3/4" Max Stud	2-1/2" - 2-3/4" (M64-M72)	Std. - in.	3-7/8 - 4-1/4	3.07	0.31	1.30	5.63	6.65	16.22	6.69	122.3 lbs	
	Metric - mm		95 - 105	78	8	33	143	169	412	170	55.5 kg		
M0201S0000XX	No.15 Head Assembly 3" Max Stud	Covers No15 - No17 Cutting Heads *M0202D0000XX	2-3/4" - 3" (M72-M76)	Std. - in.	4-1/4 - 4-5/8	4.29	0.40	1.55	6.93	7.64	19.56	7.56	141.1 lbs
	Metric - mm			105 - 110	109	10	39.5	176	194	497	192	64 kg	
M0201T0000XX	No.16 Head Assembly 3.1/4" Max Stud		3" - 3-1/4" (M76-M85)	Std. - in.	4-5/8 - 5	4.29	0.40	1.61	6.93	8.03	20.00	7.99	160.9 lbs
	Metric - mm			110 - 120	109	10	41	176	204	508	203	73 kg	
M0201U0000XX	No.17 Head Assembly 3.1/2" Max Stud	3-1/4" - 3-1/2" (M85-M90)	Std. - in.	5 - 5-3/8	4.29	0.40	1.67	6.93	8.35	20.39	8.50	182.9 lbs	
	Metric - mm		120 - 130	109	10	42.5	176	212	518	216	83 kg		

\* Select required cutting heads along with appropriate hydraulic cylinder for complete tool assemblies