

Model 250 ENERGEX Electronic Pilot



Description

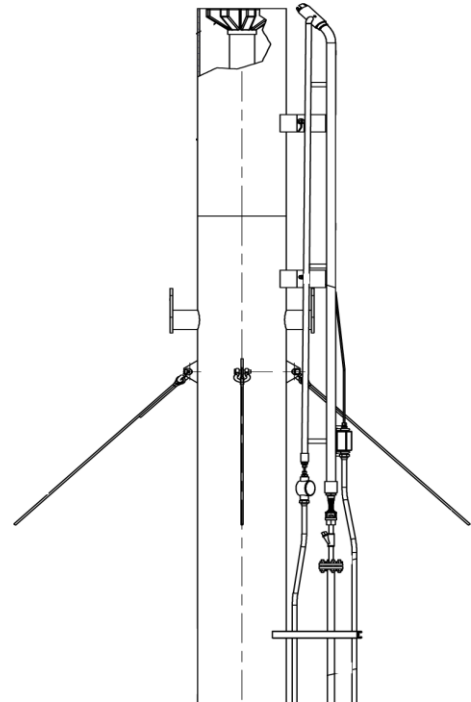
The Model 250 ENERGEX Pilot is a high alloy, stainless steel pilot which combines a high voltage electronic Exciter and a high energy spark rod to provide rapid, reliable ignition. More importantly, the ENERGEX pilot provides instantaneous re-ignition if the pilot should ever lose its flame. This pilot system uses a fuel gas line much like other standard pilots, however, instead of a flame front generator it utilizes the “Exciter” which produces a high voltage arc inside the pilot nozzle.

An inspirator induces air into the fuel gas line creating a combustible mixture for the Exciter to ignite. After ignition, if the flame should ever go out the thermocouple will sense this loss of flame and will send a signal to the control panel. The Exciter then begins to arc until the pilot is lit and the thermocouple no longer senses a flame failure. The spark rod, because of its integral location in the pilot head, can initiate re-ignition immediately. The Model 250 ENERGEX Pilot is an innovative solution for flaring applications in which extended downtime is a critical concern.

Model 250 ENERGEX Electronic Pilot

Advantages

- Rapid Re-ignition response time
- Low fuel consumption
- Ease of installation and/or retro-fit applications
- Durability due to high alloy, stainless steel construction
- Reliability: ignition and re-ignition
- Flame stability: wind velocities up to 150 mph (240 km/hr)



Specifications

MATERIALS

| | |
|-----------------------|---------------------------------|
| Head | 309/310 SS |
| Pilot gas line | 316 SS |
| Exciter line | 316 SS |
| Inspirator | Cast Iron |
| Consumption: | 65 SCFH of Natural Gas @ 8 Psig |
| Fuel: | Natural gas, propane, butane |

DIMENSIONS

| | |
|----------------|------------------|
| Length: | 11'-0" (4.3m) |
| Weight: | 52 lb. (23.6 kg) |

Design Features

- Robust spark rod assembly
- Mass isolated igniter housing produces spark even when submerged in water
- High alloy steel construction

