

SCREW TYPE SERIES

DESCRIPTION

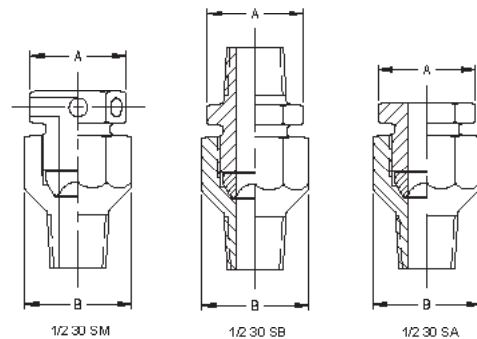
The typical Screw Type Rupture Disc Holder (without rupture disc) is a three-piece unit consisting of a base (inlet), holddown ring, and an outlet nut. When assembled, with rupture disc in place, the crown of the disc protrudes into the holddown ring. The base and holddown ring grip the rupture disc while the outlet nut provides the compression necessary to create a metal to metal seal.

Fike's Screw Type Rupture Disc Holders are confined to the 1/2 inch nominal disc size. They are available in four styles: (1) 1/230, (2) 1/2100, (3) S1/210, (4) 1/2SP10. All these styles may be applied to a pressure system, or set-up, through standard NPT connections.

1/230 SCREW TYPE HOLDER

The 1/230 Screw Type Rupture Disc Holder utilizes the 30° angular seating arrangement and is designed for use with Fike's Conventional Prebulged P and CPV Series Rupture Discs. This style of Screw Type Holder is reusable and limited to a maximum pressure of 3000 PSIG. Standard 1/230 Screw Type Holder dimensions and configurations, with assembly letter designations, may be located in the table below.

Assembly No.	Connections		Hex Size Across Flats		Overall Height
	Inlet	Outlet	A	B	
1/2-30SA-12	1/4 NPT	Free	1-1/8	1-1/4	2-5/16
1/2-30SA-10	1/2 NPT	Free	1-1/8	1-1/4	2-5/16
1/2-30SB-15	1/4 NPT	1/2 NPT	1-1/8	1-1/4	3-1/8
1/2-30SB-10	1/2 NPT	1/2 NPT	1-1/8	1-1/4	3-1/8
1/2-30SM-12	1/4 NPT	Muffled	1-1/8	1-1/4	2-1/2
1/2-30SM-10	1/2 NPT	Muffled	1-1/8	1-1/4	2-1/2

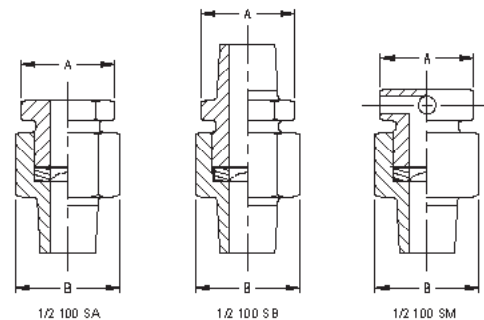


1/2100 SCREW TYPE HOLDER

The 1/2100 Screw Type Rupture Disc Holder utilizes the flat seating arrangement which is characteristic of, and for use with, Conventional Prebulged or Scored Rupture Discs. This style of holder is reusable and has a maximum pressure rating of 10,000 psig. Special holders, similar to the 1/2100 type, can be furnished in other nominal sizes and for pressure up to 100,000 psig. Standard 1/2100 Screw Type Holder dimensions and configurations, with assembly letter designations, are located in the table below.

Standard material of construction for the 1/230 and 1/2100 Rupture Disc Holders is 316 stainless steel. Other materials may be specified.

Assembly No.	Connections		Hex Size Across Flats		Overall Height
	Inlet	Outlet	A	B	
1/2-100SA-12	1/4 NPT	Free	1-1/8	1-1/4	2-1/8
1/2-100SA-10	1/2 NPT	Free	1-1/8	1-1/4	2-1/8
1/2-100SB-15	1/4 NPT	1/2 NPT	1-1/8	1-1/4	2-15/16
1/2-100SB-10	1/2 NPT	1/2 NPT	1-1/8	1-1/4	2-15/16
1/2-100SM-12	1/4 NPT	Muffled	1-1/8	1-1/4	2-5/16
1/2-100SM-10	1/2 NPT	Muffled	1-1/8	1-1/4	2-5/16



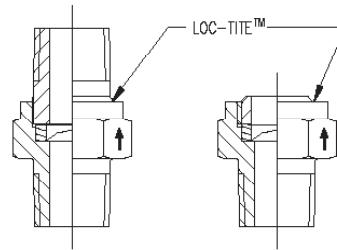
Form No. R.1.38.01-1

S $\frac{1}{2}$ 10 SCREW TYPE HOLDER

The S $\frac{1}{2}$ 10 Screw Type Rupture Disc Holder utilizes the flat seating arrangement and is used with a Fike Conventional Prebulged or scored Rupture Disc. This style of holder is supplied with the rupture disc installed, sealed, and leak-tested at the factory. The S $\frac{1}{2}$ 10 unit has a maximum pressure rating of 1,000 psig, and is discarded after bursting of the rupture disc. Standard S $\frac{1}{2}$ 10 Screw Type Rupture Disc Holder dimensions and configurations, with assembly letter designations, are located in the table below.

While the standard material of construction is brass for the S $\frac{1}{2}$ 10 and $\frac{1}{2}$ SP10 bodies, other materials may be specified. Rupture Discs for these holders are available in a wide range of materials.

Assembly No.	Connections		Hex Size Across Flats	Overall Height
	Inlet	Outlet		
S $\frac{1}{2}$ 10	1/2 NPT	Free	1-1/8	1-7/16
S $\frac{1}{2}$ 10A	1/4 NPT	Free	1-1/8	1-7/16
S $\frac{1}{2}$ 10B	3/8 NPT	Free	1/1/8	1-7/16
S $\frac{1}{2}$ 10C	1/2 NPT	1/2 NPT	1-1/8	2-3/16
S $\frac{1}{2}$ 10D	1/4 NPT	1/2 NPT	1-1/8	2-3/16
S $\frac{1}{2}$ 10E	3/8 NPT	1/2 NPT	1-1/8	2-3/16
S $\frac{1}{2}$ 10F	1/2 NPT	1/4 NPT	1-1/8	2-3/16
S $\frac{1}{2}$ 10G	1/4 NPT	1/4 NPT	1-1/8	2-3/16
S $\frac{1}{2}$ 10H	3/8 NPT	1/4 NPT	1-1/8	2-3/16
S $\frac{1}{2}$ 10K	1/2 NPT	3/8 NPT	1-1/8	2-3/16
S $\frac{1}{2}$ 10L	1/4 NPT	3/8 NPT	1-1/8	2-3/16
S $\frac{1}{2}$ 10M	3/8 NPT	3/8 NPT	1-1/8	2-3/16

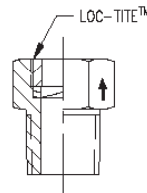


S1/2 10 ASSEMBLIES

$\frac{1}{2}$ SP10 SCREW TYPE HOLDER

The $\frac{1}{2}$ SP10 Screw Type Rupture Disc Holder is manufactured and used in the same manner as the S $\frac{1}{2}$ 10 Holder except that it is smaller and lighter in weight. Standard $\frac{1}{2}$ SP10 Holder dimensions and configurations, with assembly letter designations, are located in the table below.

Assembly No.	Connections		Hex Size Across Flats	Overall Height
	Inlet	Outlet		
$\frac{1}{2}$ SP10	1/2 NPT	Free	1"	1-5/16
$\frac{1}{2}$ SP10A	1/4 NPT	Free	7/8	1-1/16
$\frac{1}{2}$ SP10B	1/8 NPT	Free	7/8	1-1/16
$\frac{1}{2}$ SP10C	3/8 NPT	Free	7/8	1-5/16



1/2 SP10 ASSEMBLIES

When ordering Screw Type Rupture Disc Holders it is necessary to specify the following: Style of Holder with Assembly Letter Designation ($\frac{1}{2}$ 30SA, $\frac{1}{2}$ 100SM, S $\frac{1}{2}$ 10E, etc.), inlet and outlet pipe size, and material requirements. For S $\frac{1}{2}$ 10 and $\frac{1}{2}$ SP10 "throw away" units the customer must also specify material and burst pressure for the rupture disc.

