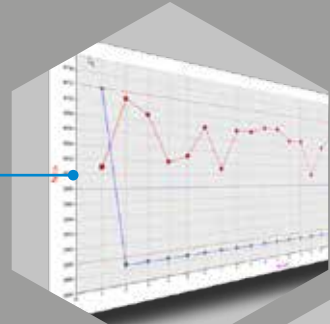


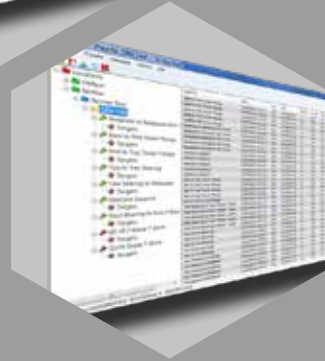
INTELLIGENT TOOL CONNECTIVITY

EBT comes supplied as standard with complimentary PC software "EvoLog" for data management and tool configuration. EBT also offers great flexibility in connection possibilities as it can be interfaced with third party production control software.

Ability to produce and store real time graphs



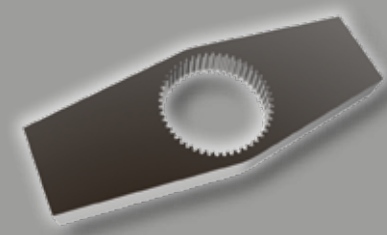
Send 'Log Results' in real time



Output results in CSV format for users not able to use EvoLog

ATTACHMENTS & ACCESSORIES

A wide range of attachments and accessories make EBT adaptable to suit many applications.



Reaction Plates

A variety of reaction plates and adaptors, together with ancillary feet, blades and heads are available to aid use. Contact Norbar for details



(19363 & 19448*)

Secondary Handle

The secondary handle is an easy to fit and versatile accessory which offers additional support and ease of handling with Norbar's Battery Torque Tools

*Suitable for use with 80 series only



(180280)

Right Angle Gearbox

The Right Angle Gearbox will provide most EBT, ET, PTS™ and PTM tools with a 90° angle of operation, enabling the operator to reach more applications where access is restricted and limited

GLOBAL SERVICE

Norbar is the only torque equipment manufacturer capable of offering tool and instrument calibration services to the original factory standard on four continents.

Accredited laboratories in Australia, USA, Singapore, China and India operate the same equipment and procedures as the UKAS accredited laboratory within our headquarters in the UK.



NORBAR TORQUE TOOLS LTD
Wildmere Road, Banbury, Oxfordshire, OX16 3JU
UNITED KINGDOM
Tel + 44 (0)1295 753600
Email sales@norbar.com



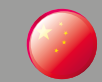
NORBAR TORQUE TOOLS
45-47 Raglan Avenue, Edwardstown
SA 5039
AUSTRALIA
Tel + 61 (0)8 8292 9777
Email enquiry@norbar.com.au



NORBAR TORQUE TOOLS INC
36400 Biltmore Place, Willoughby
Ohio 44094
USA
Tel + 1 866 667 2272
Email inquiry@norbar.us



NORBAR TORQUE TOOLS PTE LTD
194 Pandan Loop, #07-20 Pantech Business Hub
SINGAPORE 128383
Tel + 65 6841 1371
Email enquires@norbar.sg



NORBAR TORQUE TOOLS (SHANGHAI) LTD
91 Builidng- 7F, No. 1122, North Qinzhou Road,
Xuhui District, Shanghai
CHINA 201103
Tel + 86 21 6145 0368
Email sales@norbar.com.cn



NORBAR TORQUE TOOLS INDIA PVT. LTD
Plot No A – 168 Khairne Industrial Area
Thane Belapur Road
Mahape Navi Mumbai – 400 709
INDIA
Tel + 91 22 2778 8480
Email enquiry@norbar.in

www.norbar.com



Part number 07591 | Issue 2

NORBAR PRODUCT PORTFOLIO



Torque Screwdrivers



Torque Wrenches



Electronic Torque Wrenches



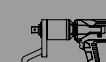
Manual Torque Multipliers



Pneumatic Torque Tools



Electronic Torque Tools



Battery Torque Tools



Torque Measurement Instruments



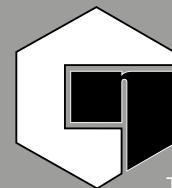
Torque Transducers



Ultrasonic Bolt Measurement



Calibration Services



Let's Talk

The live chat feature can be found at the bottom right of any page on our website

Distributed by



NEW



EVOTORQUE® BATTERY TOOL

DRIVEN BY TECHNOLOGY, POWERED BY BATTERY,
READY FOR INDUSTRY



THE EVOTORQUE® BATTERY TOOL (EBT) FEATURES A NEW BRUSHLESS MOTOR, DATA MEMORY AND DATA TRANSFER CAPABILITIES. NORBAR HAVE COMBINED THIS WITH THEIR RESPECTED GEARBOXES TO DELIVER A RANGE OF FAST, RELIABLE, ACCURATE BATTERY TORQUE TOOLS.

Fast: EBT uses a powerful motor coupled with either a single speed or auto two speed gearbox for rapid joint completion times.

Durable: The industrial motor used by the EBT will keep going where most other battery tools will overheat.

Accurate: EBT is a transducer controlled battery powered torque tool designed for accurately applying torque to threaded fasteners. The unique 'intelligent joint sensing' technology continually measures the joint during tightening and when necessary, employs dynamic braking to avoid torque over-shoot due to motor inertia, consistently achieving highly accurate results of ±3% of setting.



made in
england



EBT-72 Series

EBT-80 Series

EBT-92 Series

The square drive is quickly and easily replaceable

Tried and tested gearbox design, reliable and proven over more than a decade

Accuracy is better than ±3%

Brushless motor for low maintenance

'Safe to start' button ensures hands are safely positioned at start up

Robust steel reaction supplied as standard

Bespoke reactions available on request

Handle and trigger designed for optimum comfort

High powered LED to illuminate application

18V, 5.0Ah battery and efficient motor give outstanding fastening performance per charge

OLED display ensures visibility in all conditions

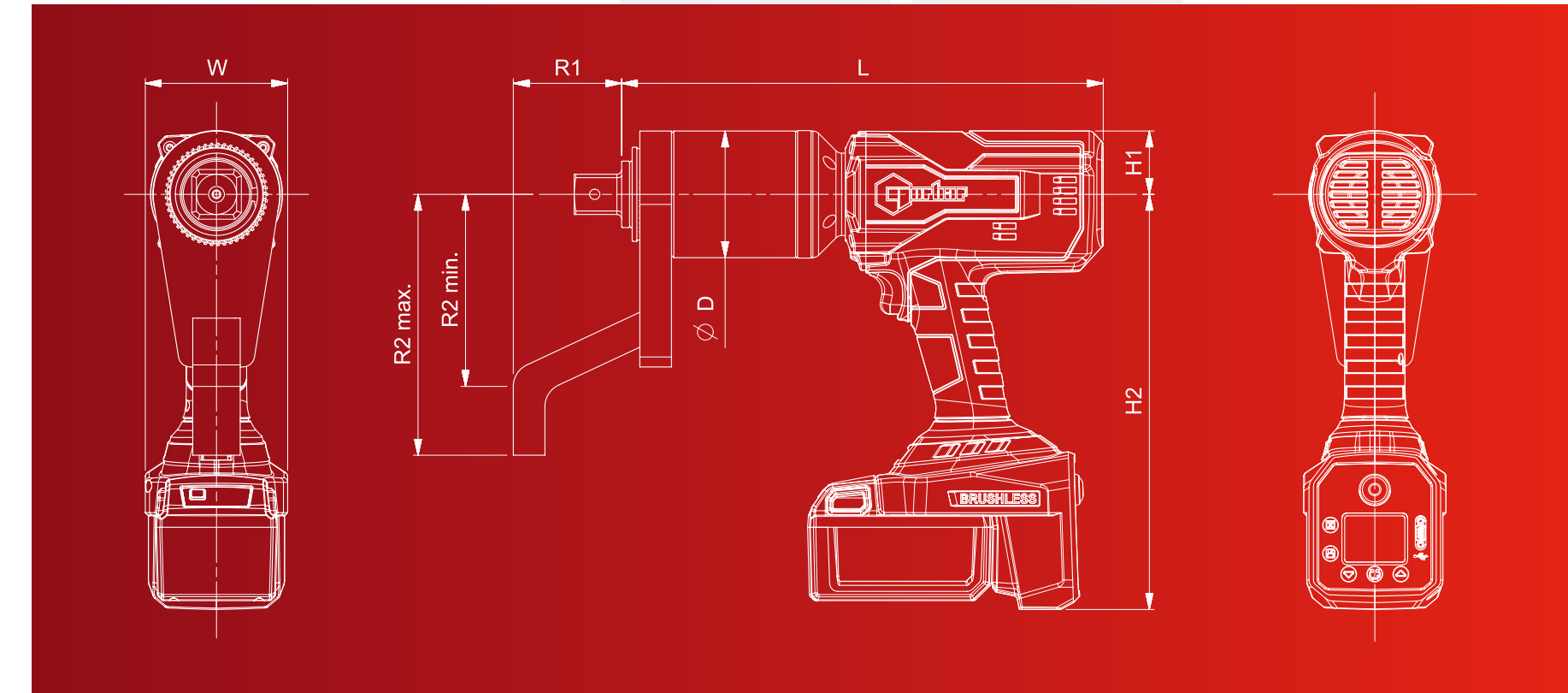
Key Lock feature prevents unauthorised usage



KEY FEATURES

- Tool is not constrained by power cable or hose, improving safety, convenience and versatility
- Retains key features and user interface from EvoTorque®2
- Multiple units of torque measurement, including N-m, lbf-ft and kgf-m
- Torque, Torque & Angle with Final Torque and Torque Audit functionality available in 'Advanced' mode
- Optional 'Ease of Use' functionality when in 'Torque Only' mode, minimising operator error
- Display and on-board storage of final torque or torque and angle values
- 3,000 reading memory, time and date stamped
- Clear indication of successful joint application
- USB and Bluetooth® 4.0 data transfer (also called Bluetooth® Smart)
- Complimentary PC software 'EvoLog' for data management and tool configuration
- 12 user IDs can be downloaded to the tool and results can be stored against individual users
- 20 unique stand-alone targets plus 20 unique work group targets for each work group
- Results can be output in CSV (comma-separated values) format for users not able to use EvoLog
- Ability to produce and store real time graphs via EvoLog
- 'Usage' counter gives the ability to see the amount of times the tool has been used since the last reset
- 'Operation Direction' feature designed primarily for undoing bolts. When doing sequence tightening, it is possible to undo an incorrectly tightened bolt without interrupting the sequence.
- Two stage tightening gives faster application of a Snug Torque & Angle Target
- 'Turn Angle' option can be used to check if bolts have already been tightened in an assembly process
- Allows tool integration into third party control systems
- Maximum Audit Mode target angle (720°)
- Available in single speed and auto 2 speed configurations

NOTE: The EvoTorque® Battery Tool is currently in development and is subject to change, therefore the information provided may alter beyond the launch of the product.



TECHNICAL SPECIFICATION

PART NUMBER	MODEL	SQUARE DRIVE	CALIBRATED RANGE		DIMENSIONS (mm)							TOOL WEIGHT (kg)*	REACTION WEIGHT (kg)	OUTPUT SPEED (rpm)	
			N-m	lbf-ft	ØD	H1	H2	L	R1	R2 min	R2 max				W
180445	EBT-72-1350	1"	200 - 1,350	150 - 1,000	72	40	262	298	76	124	167	90	5.7	1.4	6.5
180469	EBT-72-1350 Auto 2 Speed	1"	200 - 1,350	150 - 1,000	72	40	262	317	76	124	167	90	6.2	1.4	32
180541	EBT-80-2700	1"	400 - 2,700	295 - 2,000	80	40	262	298	76	124	167	90	5.9	1.4	3.3
180565	EBT-80-2700 Auto 2 Speed	1"	400 - 2,700	295 - 2,000	80	40	262	333	76	124	167	90	6.5	1.4	13
180637	EBT-92-4000	1"	800 - 4,000	590 - 2,950	92	40	262	352	70	125	175	90	7.9	2.5	2.3
180661	EBT-92-4000 Auto 2 Speed	1"	800 - 4,000	590 - 2,950	92	40	262	387	70	125	175	90	8.5	2.5	9.5

NOTE: N-m only and Right Angle Gearbox versions will be available soon, please contact Norbar for details.

* Tool weight excludes both reaction and battery. The battery weighs 0.8 kg.