

## GLOBE VALVE CLASS 150/300/600

### DESIGN DESCRIPTION:

- Outside Screw and Yoke
- Bolted Bonnet
- Rising Stem and Handwheel (Impact-Hummer Handwheel for 10 ° & Over)
- Yoke Integral With Bonnet
- Loose Disc
- Renewable Seat Rings
- Flanged Ends
- Buttwelding Ends

### APPLICABLE STANDARDS:

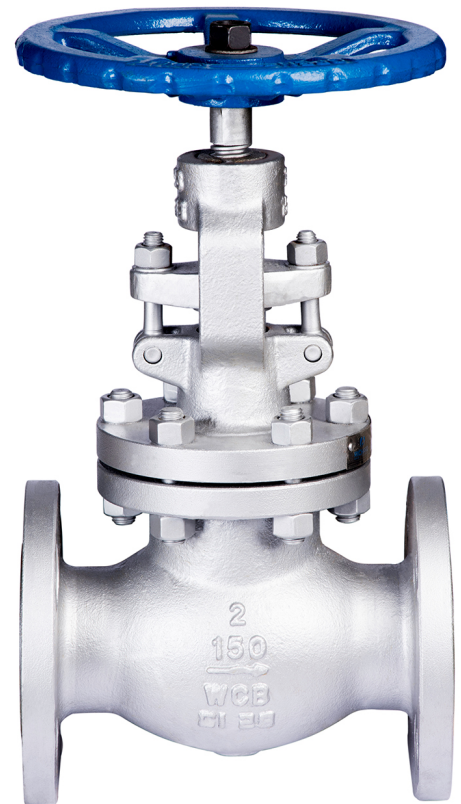
- Manufacture, API 6D or API 600
- Steel Valve, ANSI B16.34
- Face to Face, ANSI B16.10
- End Flange, ANSI B16.5
- Buttwelding Ends, ANSI B16.25
- Inspection and Test, API 6D or API 598

### MATERIALS LIST:

NO.	PART NAME	MATERIALS		
		WCB	WC6	LCB
1	BODY	A216-WCB	A217-WC6	A352-LCB
2	SEAT	A105+H/F STL#6	A182-FII+H/F STL#6	A350-LF2+H/F ST
3	DISC	A216-WCB+H/F 410	A217-WC6+H/F 410	A352-LCB+H/F 410
4	BONNET BOLT	A193-B7	A193-B7	A193-B7M
5	BONNET	A216-WCB	A217-WC6	A325-LCB
6	BONNET BOLT NUT	A194-2H	A194-2H	A194-2HM
7	BONNET BUSH	A276-410		
8	GLAND PACKING	GRAPHITE		
9	EYE BOLT PIN	A276-410		
10	EYE BOLT	A307		
11	GLAND	A276-410		
12	GLAND FLANGE	A216-WCB		
13	STEM BOLT	A193-B7		
14	RETAINER NUT	A36		
15	PLATE	ALUMINA		
16	WHEELNUT	A36		
17	STEM	A182-F6A		
18	HAND WHEEL	A47/A536		
19	GASKET	GRAFOIL+316 SHEET		
20	DISC NUT	A276+410		

### TEST API TO 598

CLASS	SHELL TEST (WATER)		SEAT TEST (WATER)		SEAT TEST (AIR)	
	MPA	PSIG	MPA	PSIG	MPA	PSIG
150	3.1	450	2.2	315	0.6	80
300	7.8	1125	5.6	815	0.6	80
600	15.3	2525	11.2	1630	0.6	80



## DIMENSIONS AND WEIGHT TABLE

### CLASS 150 GLOBE VALVE FLANGED END AND WELDING END

DN	NPS	d	L	LJ	D	D1	D2	b	Z* d	W	H	Wt (kg)
50	1/2	1/2	4-1/4	-	3-1/2	2-3/8	1-3/8	-	4*5/8	4	7-1/8	3.5
65	3/4	3/4	4-5/8	-	3-7/8	2-3/4	1-11/16	-	4*5/8	4	7-1/2	3.9
80	1	1	5	-	4-1/4	3-1/8	2	7/16	4*5/8	4-3/4	8-1/2	5.8
100	1-1/2	1-1/2	6-1/2	-	5	3-7/8	2-7/8	9-16	4*5/8	5-1/4	10	10.8
150	2	2	8	-	6	4-3/4	3-5/8	5/8	4*3/4	7-7/8	13	20
200	2-1/2	2-1/2	8-1/2	-	7	5-1/2	4-1/8	11/16	4*3/4	9-7/8	14-1/8	32
250	3	3	9-1/2	-	7-1/2	6	5	3/4	4*3/4	11	15-3/8	42
300	4	4	11-1/2	-	9	7-1/2	6-3/16	15/16	8*3/4	11-3/4	17-1/2	64
350	6	6	16	-	11	9-1/2	8-1/2	1	8*7/8	13-3/4	20-1/2	114
400	8	8	19-1/2	-	13-1/2	11-3/4	10-5/8	1-1/8	8*7/8	15-3/4	24	186

### CLASS 300 GLOBE VALVE FLANGED END AND WELDING END

DN	NPS	d	L	LJ	D	D1	D2	b	Z* d	W	H	Wt (kg)
50	1/2	1/2	6	6-7/16	3-3/4	2-5/8	1-3/8	9/16	4*5/8	4	6-3/8	3
65	3/4	3/4	7	7-1/2	4-5/8	3-1/4	1-11/16	5/8	4*3/4	4-3/4	6-5/8	5.3
80	1	1	8	8-1/2	4-7/8	3-1/2	2	11/16	4*3/4	5	7-5/8	7.3
100	1-1/2	1-1/2	9	9-1/2	6-1/8	4-1/2	2-7/8	13-16	4*7/8	6-5/8	9-1/4	15.4
150	2	2	10-1/2	11-1/8	6-1/2	5	3-5/8	7/8	8*3/4	7-7/8	15-1/4	26
200	2-1/2	2-1/2	11-1/2	12-1/8	7-1/2	5-7/8	4-1/8	1	8*7/8	7-7/8	16-1/2	40
250	3	3	12-1/2	13-1/8	8-1/4	6-5/8	5	1-1/8	8*7/8	11	17-1/4	50
300	4	4	14	14-5/8	10	7-7/8	6-3/16	1-1/4	8*7/8	11-3/4	20-1/4	90
350	6	6	17-1/2	18-1/8	12-1/2	10-5/8	8-1/2	1-7/16	12*7/8	15-3/4	26	160
400	8	8	22	22-5/8	15	13	10-5/8	1-5/8	12*1	17-3/4	35-1/2	290

### CLASS 600 GLOBE VALVE FLANGED END AND WELDING END

DN	NPS	d	L	LJ	D	D1	D2	b	Z* d	W	H	Wt (kg)
50	1/2	1/2	6-1/2	6-7/16	3-3/4	2-5/8	1-3/8	9/16	4*5/8	4	6-3/8	4.5
65	3/4	3/4	7-1/2	7-1/2	4-5/8	3-1/4	1-11/16	5/8	4*3/4	5-1/2	6-5/8	7.3
80	1	1	8-1/2	8-1/2	4-7/8	3-1/2	2	11/16	4*3/4	6-1/4	7-5/8	9.6
100	1-1/2	1-1/2	9-1/2	9-1/2	6-1/8	4-1/2	2-7/8	7/8	4*7/8	7-1/2	9-1/4	19
150	2	2	11-1/2	11-5/8	6-1/2	5	3-5/8	1	8*3/4	10	14-1/4	35
200	2-1/2	2-1/2	13	13-1/8	7-1/2	5-7/8	4-1/8	1-1/8	8*7/8	10-1/2	15-1/2	50
250	3	3	14	14-1/8	8-1/4	6-5/8	5	1-1/4	8*7/8	12	18-1/4	60
300	4	4	17	17-1/8	10-3/4	8-1/2	6-3/16	1-1/2	8*1	15-3/4	21-1/2	110
350	6	6	22	22-1/8	14	11-1/2	8-1/2	1-7/8	12*1-1/8	19-1/2	34-3/4	230